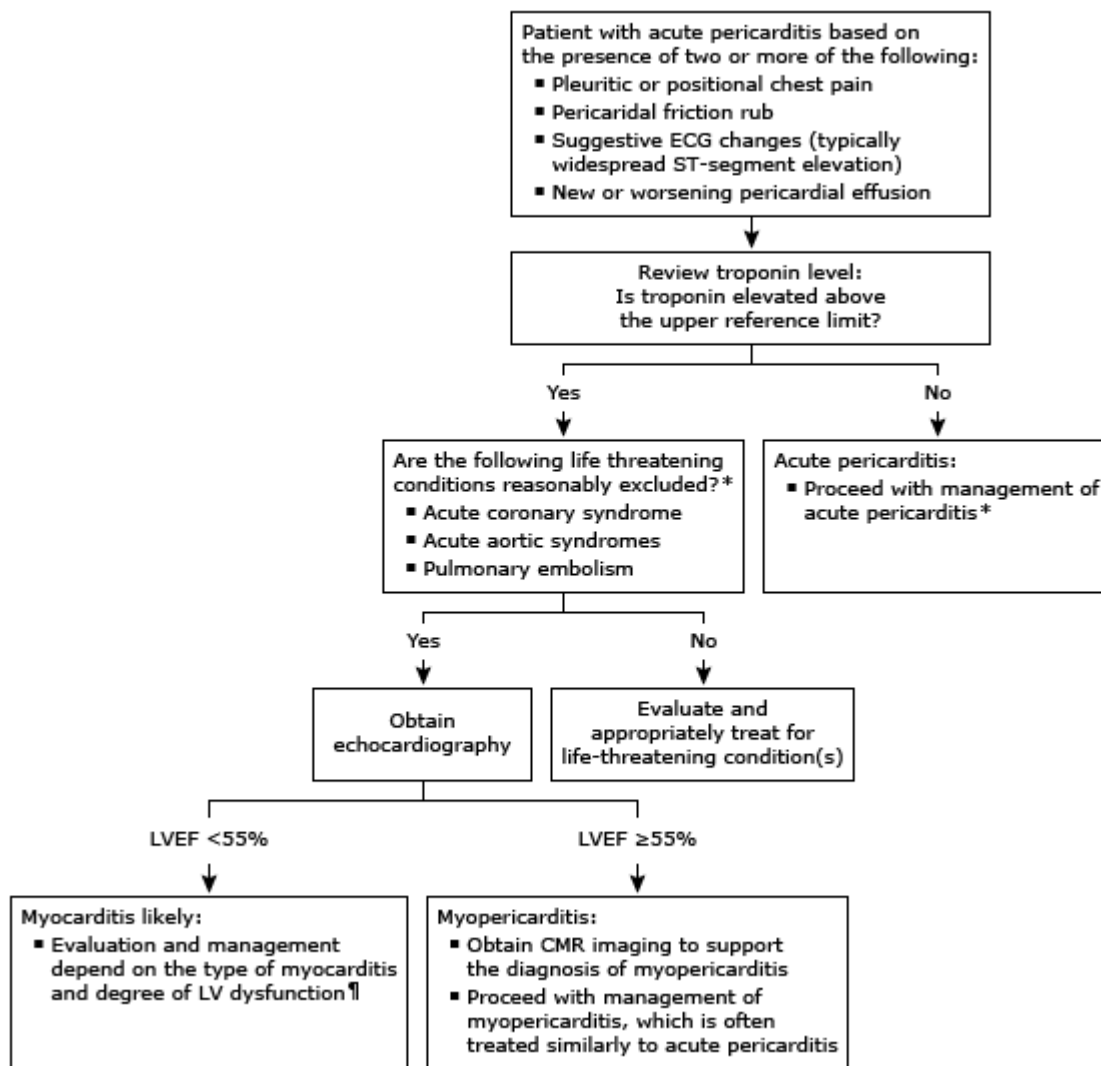




Official reprint from UpToDate®
www.uptodate.com © 2023 UpToDate, Inc. and/or its affiliates. All Rights Reserved.



Diagnostic evaluation of myopericarditis in patients with acute pericarditis



ECG: electrocardiogram; LVEF: left ventricular ejection fraction; LV: left ventricular; CMR: cardiovascular magnetic resonance.

* Refer to related UpToDate content.

¶ Refer to UpToDate content on the clinical manifestations and diagnosis of myocarditis in adults.

Graphic 132075 Version 1.0